

Ragno Spider TSJ 34/R

Wheeled Version



Features:

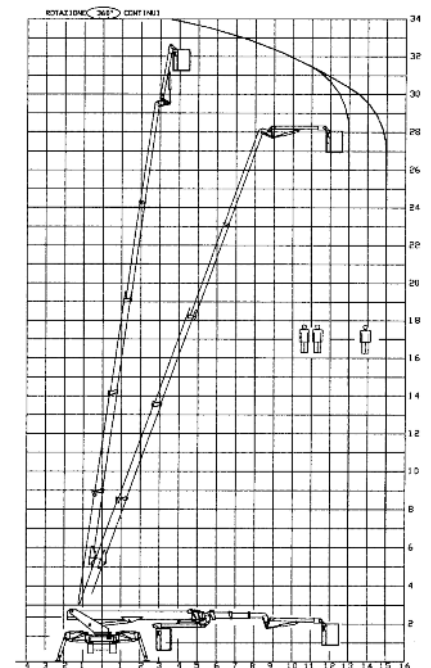
- Self-propelled electro-hydraulic drive system ensures smooth and controlled operation and excellent manoeuvrability.
- Removable cage and compact dimensions allows machine to fit through the narrowest entrances.
- Bi-Energy - Diesel engine for external work and 230VAC electric motor for internal or silent use. Can also be supplied with a DC battery power-pack.
- Quick and easy to operate with platform and remote control ground control boxes.
- Low weight and minimal point loads allows the machine to be used on sensitive flooring or lawns.
- Non-marking tyres available for use on sensitive flooring.
- Very flexible due to jib and rotating cage and variable jack positions; Allows access to awkward areas.



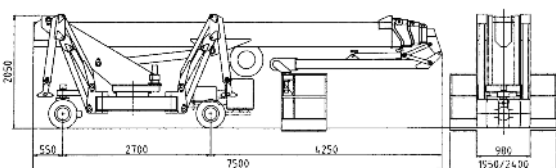
Specification:

Diesel Engine	10kW
Electric Motor	230V - 2.3kW
Maximum Slope	25%
Maximum Speed	2kmh
Turntable Slewing	360° Continuous
Aerial Cage	2.4 x 0.8m
Cage Rotation	80° + 80°
Safe Work Load	200kgs
Weight	5800kgs

Working Envelope:



Dimensions:



All data is for guidance only and is subject to change without prior notice.

For more information call: 0845 603 5360 or e-mail: info@trackedaccess.com

www.trackedaccess.com