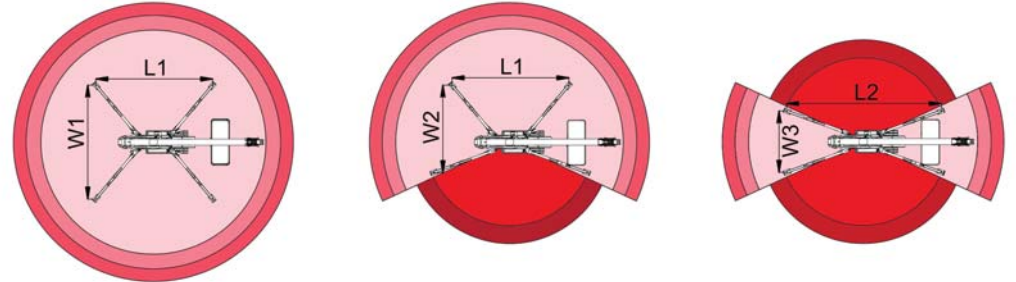
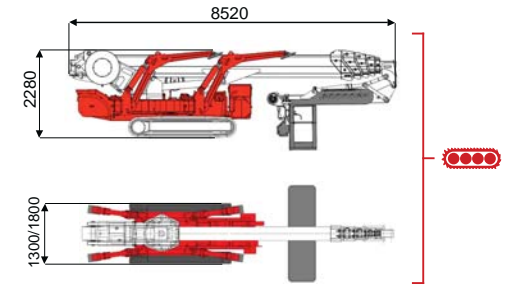
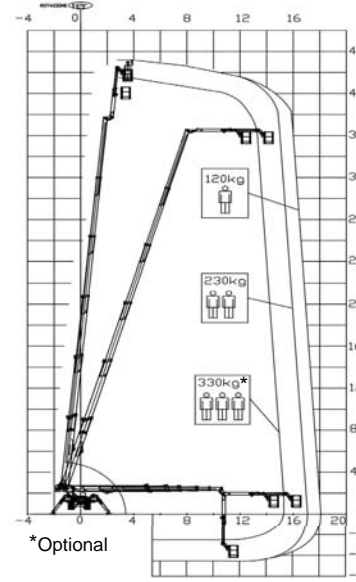




43 m ↑  
18 m →  
330 Kg 🧑🧑🧑



15000 mm	17000 mm	18000 mm	11500 mm	13500 mm	L1	L2	W1	W2	W3
330 kg	230 kg	120 kg	330 kg	120/230 kg	5760 mm	6870 mm	5330 mm	4510 mm	3690 mm



XTJ 43/C-R 43 m 18 m 330 kg 175° 660° 240x70 cm 90°+80° 3,69-5,33 m 25% 40% 2,25 km/h 10900 kg 75 kN 4,06 kN/m² 5,33 kN/m² 1350/1800 mm 8520 mm 2280 mm

	Battery type	Battery charge	Add. Weight	Autonomy	Charging time	Electropump	
ECO	DC+AC	48V 270 A/h 5h	230V-48V 45A	400 kg	6-7 h endless	7h	48V 9 kW

TCA Lifting Ltd  
Unit 4, Derby Dell Buildings, Lasham  
Hampshire. GU34 5RX United Kingdom  
Tel. (+44) 0845 603 5360  
info@tcalifting.com  
www.tcalifting.com

