

# UR-W245C

# UNIC MINI-CRAWLER CRANE

**UR-W245C is compact enough, yet provides the maximum 2.43t of lifting power.**

It is capable of lifting heavy loads of 2.43t with its class-leading minimum dimension and weight. The light weight yet allows it to move floor to floor in a standard freight elevator. Its compactness together with heavy lifting capacity provides excellent lifting solutions especially in restricted or confined area.

**Max 5.85m**  
Working radius

**Max 2.43t**  
×1.5m  
Lifting capacity

**Max 6.3m**  
Hook height (Approx.)  
(Above ground level)

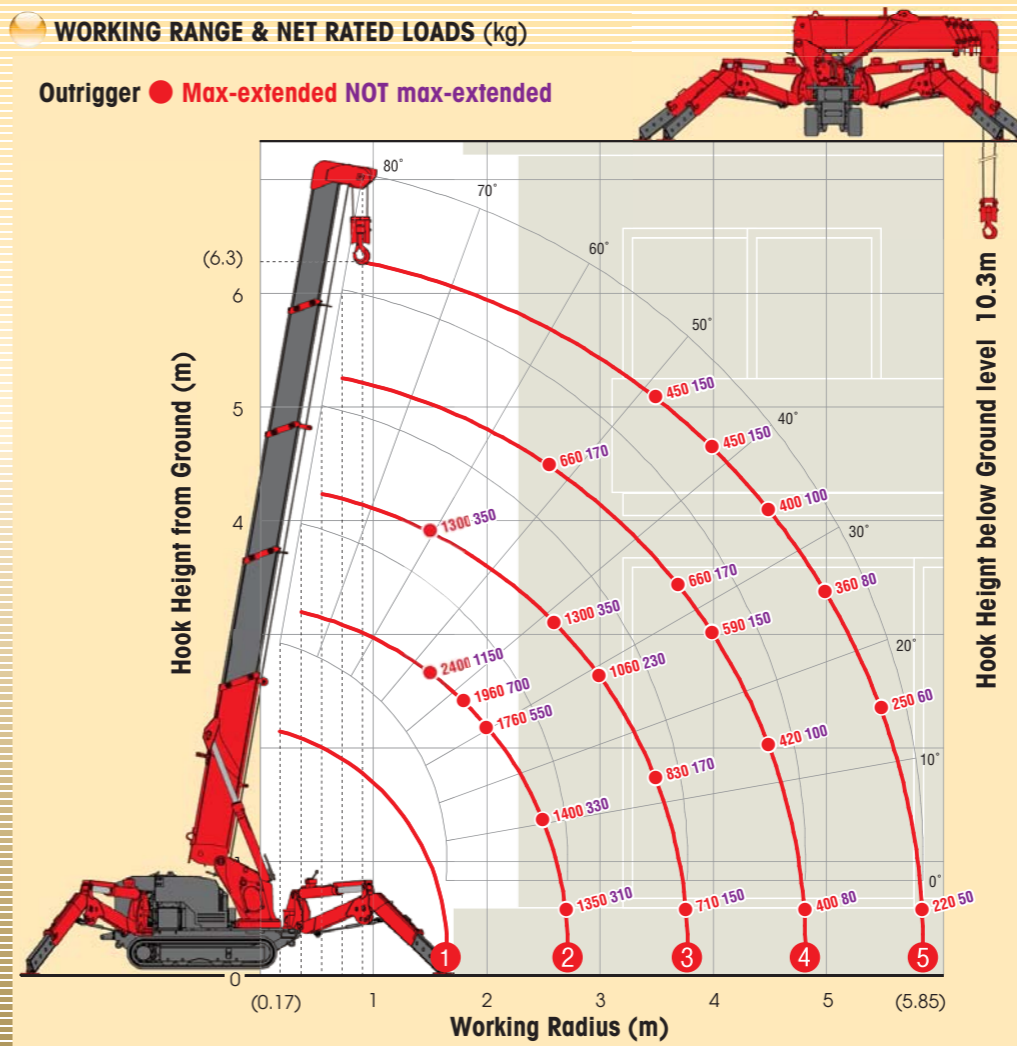
**1500kg**  
Mass of crane

Radio remote control



## WORKING RANGE & NET RATED LOADS (kg)

Outrigger ● Max-extended NOT max-extended



### Automatic stop for overwinding

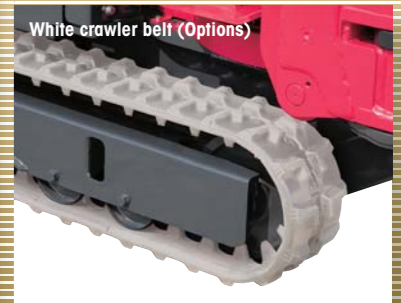


Weight for Automatic stop for overwinding

### Emergency stop button



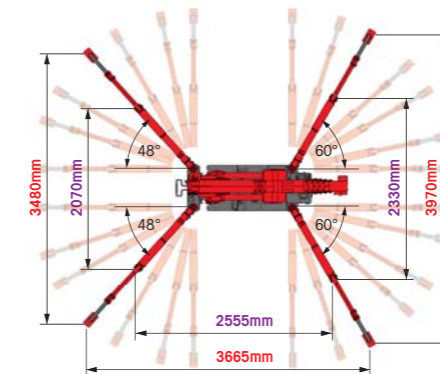
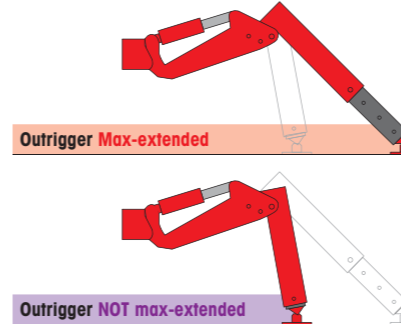
### White crawler belt (Options)



## SPECIFICATIONS

Crane model	UR-W245C
Lifting capacity	Max. 2.43t at 1.5m
Working radius	Min. 0.17m, Max. 5.85m
Hook height (Approx.)	Max. 6.3m
	Max. 10.3m with 4-part line
Length	Min. 1.98m to Max. 6.19m
Extending speed	4.21m / 14.0 sec.
Raising angle / speed	0° to 80° / 10.0 sec.
Structure	5-section box beam type telescoping boom
Single line speed	52.0 m/min (at 4th layer)
Hook speed	13.0 m/min at 4th layer with 4-part line
Structure	Hydraulic motor driven, spur gear reduction, with automatic mechanical brake
Wire rope	Construction : IWRC 6 x WS(26) GRADE B / Diameter x Length : 8mm x 47.5m / Breaking strength : 42.4kN [4320 kgf]
Hook block	2.40t capacity, 2 sheaves with safety latch
Range	360° continuous rotation on a ball bearing race
Speed	2.0 rpm
Structure	Trochoid motor, worm gear reduction, spur gear reduction, and worm self-locking brake (supported by ball bearings)
Outriggers	2-section (with damper) for bend and 3-section extension. Double acting hydraulic cylinders with pilot-operated check valves, direct pushing type (Directly connected with hydraulic automatic lock device)
Type	Variable delivery piston pump
Rated pressure	21.6 MPa [220 kgf/cm <sup>2</sup> ]
Rated delivery	36 liters/min
Rated revolution	1800 rpm
Hydraulic oil tank capacity	23 liters
Safety devices	Pressure relief valve for hydraulic circuit / Counterbalance valves for boom raising and boom telescoping cylinders / Double pilot-operated check valves for outrigger cylinders Boom angle indicator with load indicator / Hook safety latch / Automatic mechanical brake for winch / Automatic stop for overwinding / Overwinding alarm Automatic stop for leaving minimum wire rope / Emergency stop button / Inter-lock device of crane and crawling levers / Level / Load meter

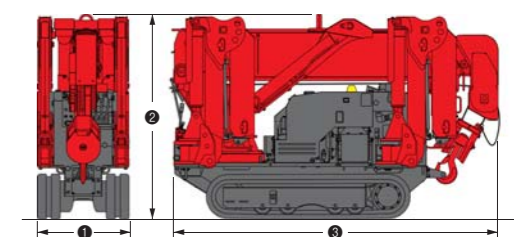
## OUTRIGGER POSITIONS



## CRAWLING GEAR

Crane model	UR-W245C
Crawling speed	Low speed : 0~2.1 km/h, High speed : 0~3.8km/h, forward / backward
Hill climbing ability	20°
Tread length	1050mm
Ground contact pressure	46.7 kPa [0.48 kgf/cm <sup>2</sup> ]
Engine manufacturer / model	Mitsubishi / GB400LE
Displacement	391cc
Maximum output	6.6kW(9.0PS) / 1800 rpm, Rated output
Fuel	Petrol
Fuel tank capacity	6 liters
Steering	Hydraulic drive independent of left / right
Starter	Starter motor

## DIMENSIONS



Crane model	UR-W245C
1 Total width	600mm
2 Total height	1340mm
3 Total Length	2150mm
Mass of crane	1500kg