

VALLA 20 E MOBILE CRANE MAX CAPACITY 2 t



PROPULSION: 1 kW-24 V DC fanned reversible electric motor fitted with electronic speed control. Disk brake on drive wheel electrically operated. Equipped with dead man cut out. Reduction between motor and wheel by gears in oil bath. Max speed 3,5 Km/h.

BATTERY: Ah 345 - V 24, battery meter on dashboard.

STEERING: by steering helm. Allowing 180° steering. Built in safety device in reverse gear.

CRANE FRAME: fabricated from preformed and welded steel plate with built-in counterweight.

WHEELS: rear 1 cushion 260 x 105. Front 2 solid tires 16 x 6 - 8".

BOOM: fabricated from preformed and welded steel plate with 2 hydraulic telescoping sections fitted with adjustable nylon wear pads and manual extension.

HYDRAULIC SYSTEM: in own enclosed circuit powered by a 2 kW - 24 V motor driven pump through two self cancelling control valves, lever operated, 1 for boom raise and lower, 1 for boom extending and retraction. Fitted with safety valves and filters. Maximum hydraulic pressure 2600 psi.

TOTAL MACHINE WEIGHT: 1.950 Kg.

OPTIONAL EXTRAS: L.M.I. (Load Moment Indicator with angle, boom extension indicators and visible warning for max capacity), manual boom extensions, man bucket, remote control, canvas cab, hydraulic winch, carry deck, battery, battery charger.

Valla S.p.A.

Via Piacenza, 45 - 29010 Calendasco - Piacenza - ITALIA
Tel. 0039 0523 762025 - 762004 - Fax 0039 0523 760531
Internet: www.valla.com - email: info@valla.com

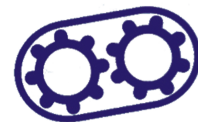
Tracked Access Ltd

Access & Lifting Specialists

t: 0845 603 5360 / f: 0845 603 5361

info@trackedaccess.com

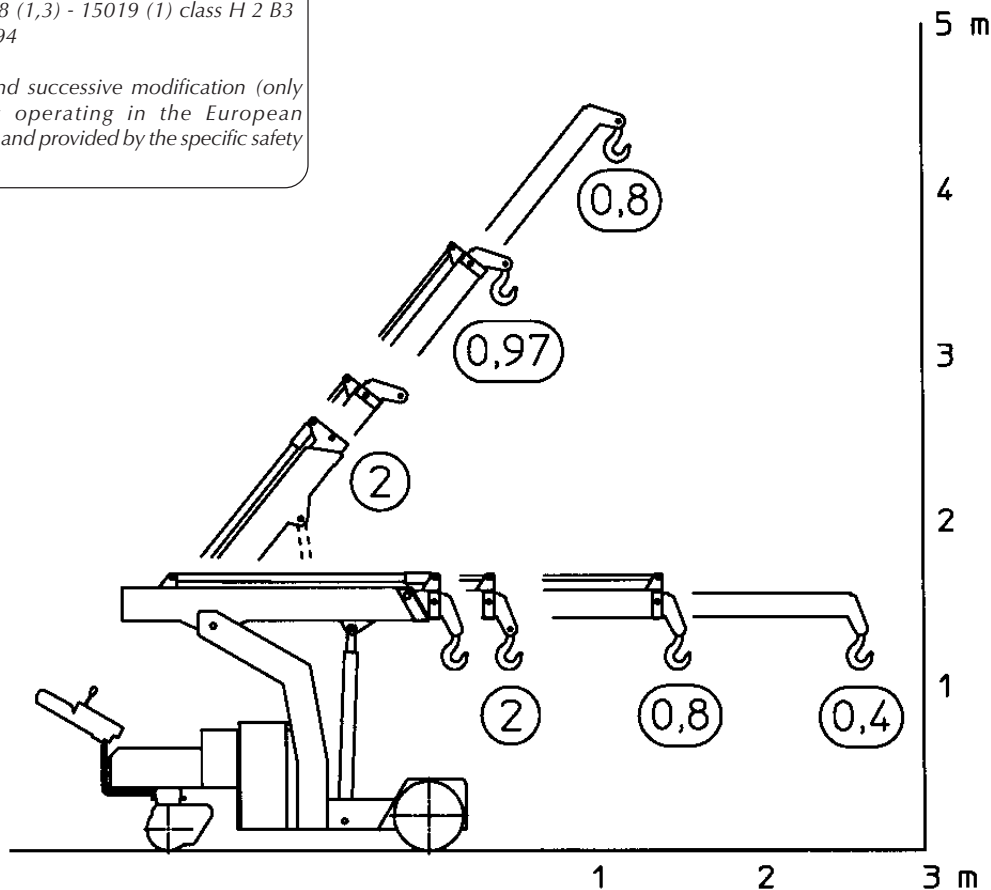
www.trackedaccess.com



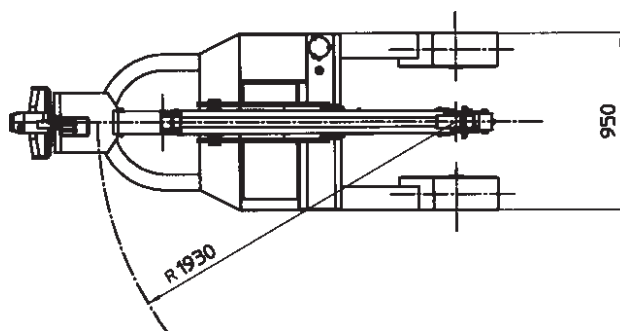
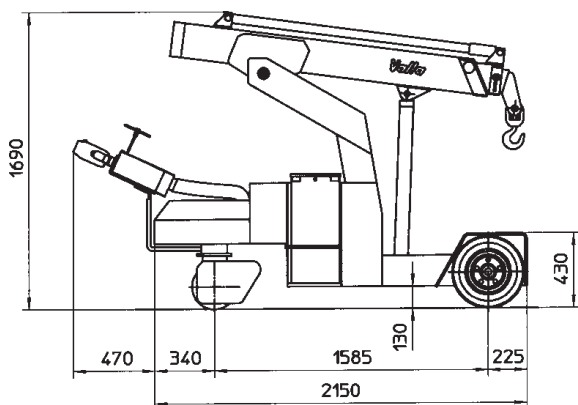
trackedaccess

The crane complies with following international standards:

- I.S.P.E.S.L.
- DIN 15018 (1,3) - 15019 (1) class H 2 B3
- ANSI - 1994
- 98/37/CE
- 89/336 and successive modification (only for cranes operating in the European Community and provided by the specific safety devices).



VALLA MODEL 20 E



Valla S.p.A.

Via Piacenza, 45 - 29010 Caldasco - Piacenza - ITALIA
Tel. 0039 0523 762025 - 762004 - Fax 0039 0523 760531
Internet: www.valla.com - email: info@valla.com



Tracked Access Ltd
Access & Lifting Specialists

t: 0845 603 5360 / f: 0845 603 5361

info@trackedaccess.com

www.trackedaccess.com